

Using Luci Live and Luci Live Lite Apps with Comrex Codec Hardware

Luci Live & Luci Live Lite

Technica del Arte BV in the Netherlands offers wideband codec apps for iPhone and Android. These are considered among broadcasters to be the easiest-to-use and best performing apps on the market.



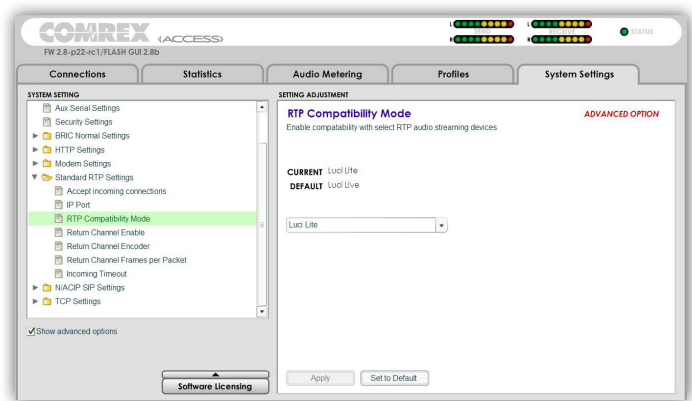
The original Luci Live app includes a recorder with non-real-time upload functions and a choice of coding algorithms (the best being HE-AAC, compatible at full bandwidth with Comrex ACCESS and BRIC-Link). The price is around \$USD300.

Now available is the Luci Live Lite app for around \$USD30. This removes the “store and forward” function and limits the codec choice to the “less-than-studio” quality of G.722, but in all other ways performs like the full Luci Live product.

Comrex codecs have been compatible with Luci Live for several years. With ACCESS or BRIC-Link firmware version 2.8p22 and higher, they are also compatible with Luci Live Lite.

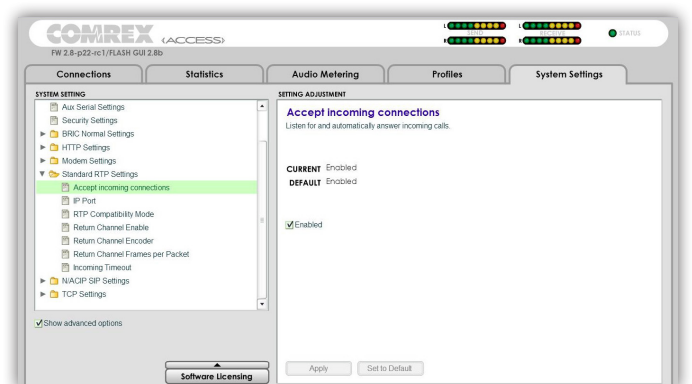
Setting up ACCESS and BRIC-Link

Configuring Comrex codecs to accept Luci calls is the first step. Fig 1 shows the ACCESS web interface page (identical in BRIC-Link). This page is the **System Settings** tab shown on the furthest right.



Notice the **Advanced Options** box is clicked on the bottom of the list, and the item labeled **RTP Compatibility mode** is opened. Here you are given a choice between “**Luci Live**” (the full version) and “**Luci Lite**” (the reduced version). A single choice must be made here--current firmware prevents supporting both apps simultaneously.

Once this selection is made, move up to the entry labeled **Accept incoming connections** and make sure the **enable** box is checked as shown in Fig 2.



Setting up Luci Live (or Lite)

Fig 3 shows the main display that appears when either Luci product is launched. This is the same display for the iPhone or Android versions. To enter the information for your ACCESS or BRIC-Link codec, press the “**gear**” icon on the bottom of the screen and choose “**add station**” from the pop-up menu. The next display is slightly different for the iPhone and Android apps.



Android

Fig 4 shows the Android new station setup display. Under name, give the entry a unique and familiar name.

Protocol should be set to RTP (N/ACIP also works, but requires different setup on the Comrex side, and more open ports)

Under server, enter the IP address of your Comrex codec.



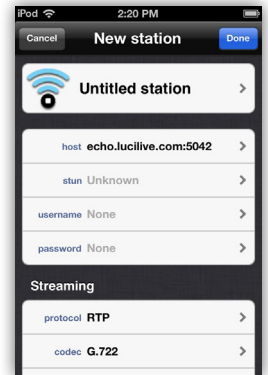
Format should be G.722 (for Luci Live Lite) and HE-AAC (for Luci Live).

All other settings should be default. Press **OK** when done. The “station” name should appear as the default outgoing connection. Press the **Mic** icon to connect and disconnect.

iPhone

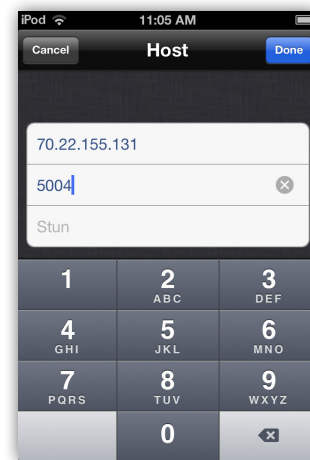
Choose **Custom station** from the next option list.

Fig 5 shows the iPhone new station setup display. Choose the top field and give your connection a unique name.



Protocol should be set to RTP (N/ACIP also works, but requires different setup on the Comrex side, and more open ports)

Click the **host** entry and you’ll see the options in Fig 6.



Under **Host address** enter, the IP address of your Comrex codec. Under port, change this value to **5004**.

All other options should remain default.

Click **Done** and the new “station” name should appear as the default outgoing connection.

Press the **Mic** icon to connect and disconnect.